

$$r = 3(1 - 2\cos\theta)$$

$$= 3 - 6\cos\theta$$

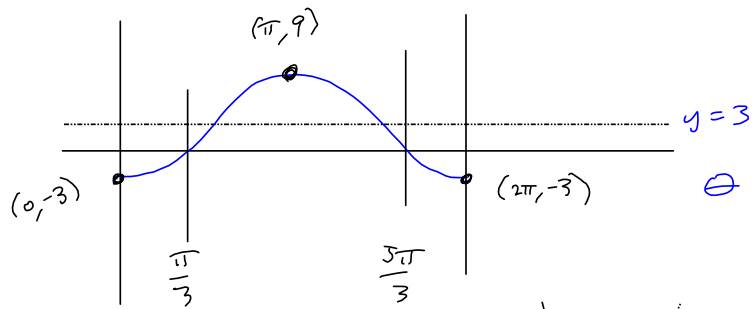
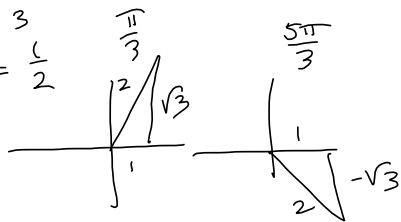
$$= -6\cos\theta + 3$$

Amp = 6
 Flip it (-6)
 midline $r = +3$

$$3 - 6\cos\theta = 0$$

$$6\cos\theta = 3$$

$$\cos\theta = \frac{1}{2}$$



The polar Graph.

