

Homework:

One side only. Include context of the question (No Answer-Sheet turn-ins!).

Space between problems.

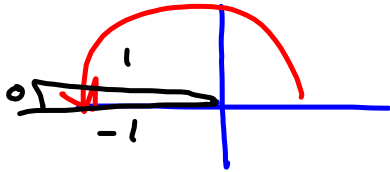
Margin at the top (Write 122-1.1 or 122-1.3, etc, in the top left corner and you'll be golden.

Everybody got a '10/10'

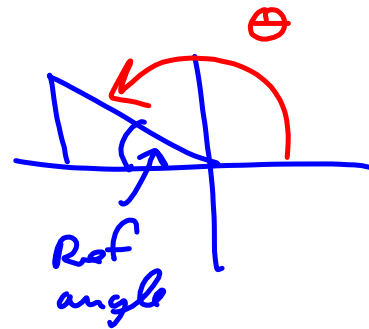
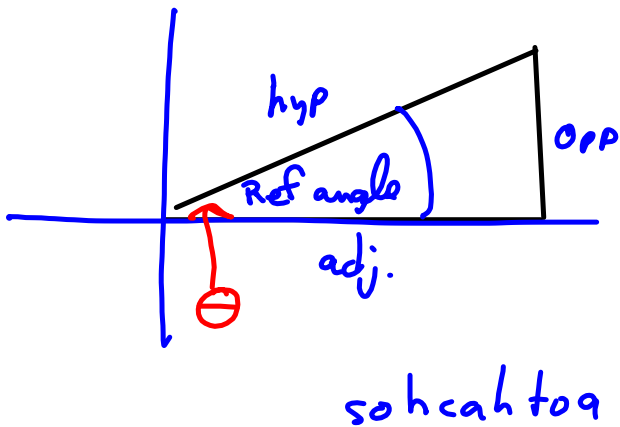
122 - § 1.4

#s 37 - 44 Evaluate the trig function
 (1) the quadrant angle.

$$(37) \sin \pi = \sin(180^\circ) = 0$$



Mnemonic for trig.



$$\sin \theta = \frac{o}{h}$$

$$\cos \theta = \frac{a}{h}$$

$$\tan \theta = \frac{o}{a}$$

QUESTIONS?

This week:

Secs 1.1, 1.2 due Tuesday

Sec 1.3, 1.4 due Thursday

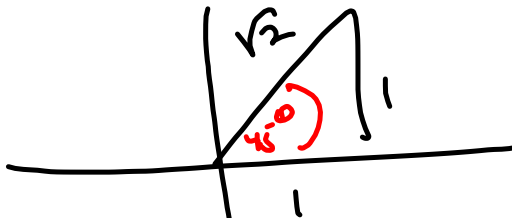
Where're you at, with 1.2 - 1.4?

By next week, you really want to be on top of or ahead of schedule, to give yourself the needed Test Prep time.

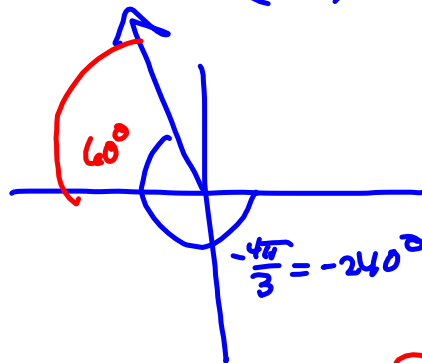
Draw the picture!

§ 1.2 #5 13 - 30.

#13 $t = \frac{\pi}{4} = 45^\circ$. DON'T use unit circle chart. Draw the 45-45 triangle!



$$\textcircled{18} \quad t = -\frac{4\pi}{3} = \left(-\frac{4\pi}{3}\right) \left(\frac{180}{\pi}\right) = -240^\circ$$



$$240 - 180 = 60, \\ \text{so}$$

