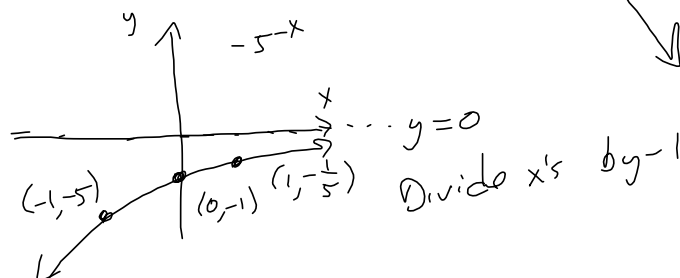
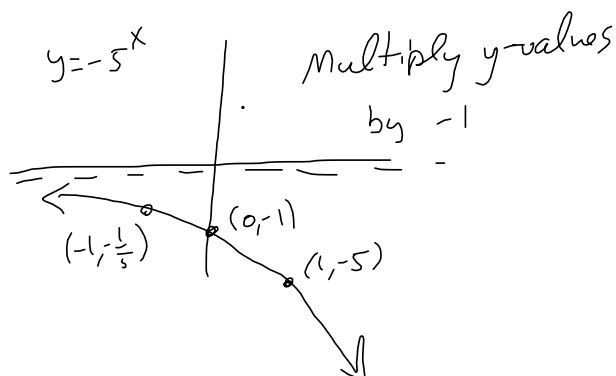
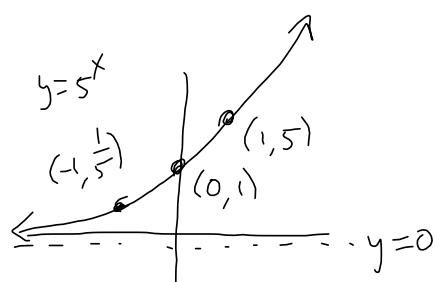


 4.1.51

Use transformations to help graph the function $y = -5^{-x}$. Identify the domain, range, and horizontal asymptote. Determine whether the function is increasing or decreasing.

The points $(-1, \frac{1}{5})$, $(0, 1)$, and $(1, 5)$ transform to the points .
(Type ordered pairs. Use a comma to separate answers as needed.)

$$y = -5^{-x}$$



See video for working the MyLab part.