

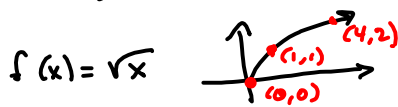
Test is handed back, wednesday.

Sorry so slow! (1 week is still standard.)

§ 2.3 - The trickiest part!  
Handling  $f(ax+b)$

Two Methods

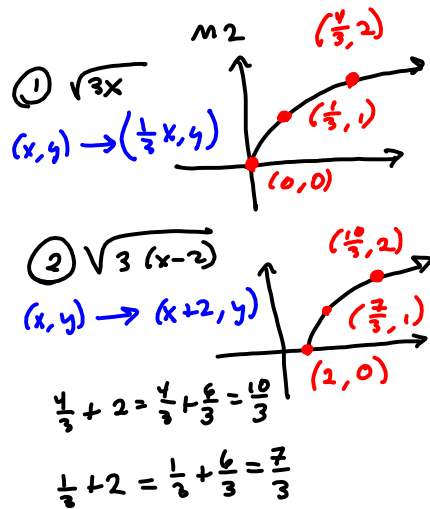
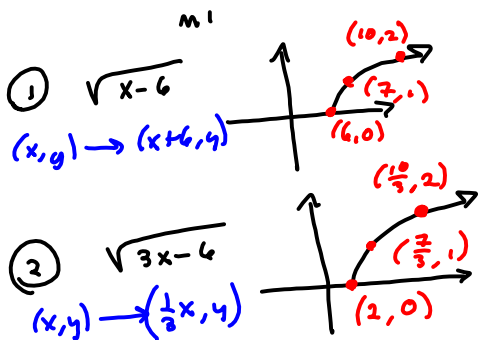
$f(x) = \sqrt{x}$  ,  $g(x) = \sqrt{3x-6}$



The basic function

- M1
- ①  $\sqrt{x-6}$
  - ②  $\sqrt{3x-6}$

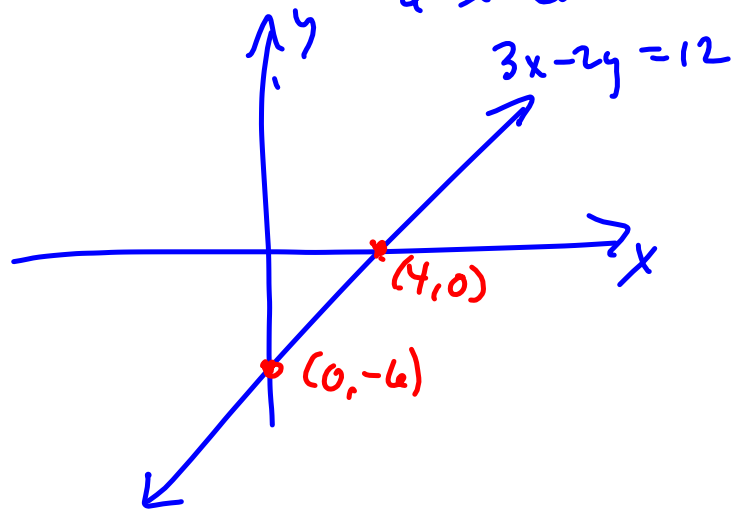
- M2 - Better for trig & beyond
- ①  $\sqrt{3x}$
  - ②  $\sqrt{3(x-2)}$



$$3x - 2y = 12$$

x	y
0	-6
4	0

How to graph  
a line



$$|3x-2| > -2$$

$(-\infty, \infty)$   
by inspection!

$$|3x-2| < -2$$

$\emptyset$   
By inspection!